



Simplicity
Functionality
Originality



Siccóna

The Structural Window

Presenting
a breakthrough
concept
in the window
systems

Siccóna **S 500**



*The premium triple tempered
Low-E glazing series.*

Siccóna **S 300**



*The standard double tempered
Low-E glazing series.*

A state-of-the-art innovation

A team of Greek product designers, product developers and glazing experts, inspired by the ancient Cycladic civilization, which flourished in the islands of the Aegean Sea from 3300 - 2000 BCE and specifically by the Cycladic Idols, the best-known marble art figures of that period and guided by its recent application in architecture, which is attributed to the famous architect **Mies van der Roche** and expressed through his famous motto:

"Less is more"

created an innovative window system, using only top quality materials and advanced engineering techniques.

The **Siccóna** structural window system stands out for its overwhelming passion for contemporary architecture.

Ultimate simplicity

Minimalism is about expressing the maximum with the minimum of gestures, words or shapes. The **Siccóna** window system has been developed in a way that every component, every detail and every junction has been reduced to its bare essentials.

Leading reliability

The function of glazing in the **Siccóna** window system becomes a structural element that itself supports the window offering thus great stability over intensive use. Two or three 6mm tempered Low-E glass panels offer the enhanced wind resistance and safety required, plus ultimate energy saving requirements, coupled by a perfectly smooth experience.

Unique versatility

The **Siccóna** window system has a vast range of possible combinations depending on the specific demands of each project.



Siccóna

The Structural Window



The Structural Window

The goal:

To create **a minimal window system** that would take into account **modern energy and safety requirements**, as well as the architectural trend to incorporate large window units into buildings.

The outcome:

The **Siccóna** brand.

Siccóna window system incorporates the revolutionary as well as worldwide tested **structural glazing concept** of the Curtain Wall and creates **a double-face** structural window.

The function of glazing was modified to become **a structural element that itself supports the window** rather than filling the aluminium frame. The result has been unparalleled functionality and extremely simple and even surfaces on both sides of the window.

Siccóna window system is completely responding to the highest architects or building professionals' requirements as far as the window size, wind impact, thermal insulation, glazing visibility, sound-proofing, security and safety requirements.

Siccóna window is a protected brand name of **Center al Ltd**, and is manufactured exclusively and without compromise to conform to the highest levels of quality.

Siccóna window system: Timeless design and impressive technology.



Right-hand and front-page pictures:

Siccóna double panel door, with triple tempered Low-E glazing and one-way mirror outside. The mirror enhances the originality and simplicity of the design as well as life's privacy inside the house, while does not affect vision - clarity and visibility from the inside.

Simplicity without compromise to meet the highest architectural requirements

Dual operative series

With the aim of fulfilling the highest quality demands **Siccóna** window system is offering two basic system series:

Siccóna S 500:

The premium triple tempered Low-E glazing series for discerning building projects and stands for the highest quality in design and technology.

Siccóna S 300:

The standard double tempered Low-E glazing series.

Siccóna window system is engineered with stepped insulated glass that covers the entire exterior and interior panel or sash of a window or door, guaranteeing the highest levels of simplicity, water tightness, durability and performance.

On the grounds of these system series, **Siccóna** window system creates a vast range of possible variants, as to comply exactly with the specific requirements of each individual project.

Excellent energy performance

Siccóna window system is an exemplary with regard to energy efficiency and complies with the highest requirements of the relevant European Union norm EN 14351-1. The system in dimensions 1.0 x 2.2 m, filled with Argon, was extensively tested by the IFT Rosenheim institute giving unequalled thermal insulation values.

IFT Rosenheim certificates of the **Siccóna** window system can be provided upon request.



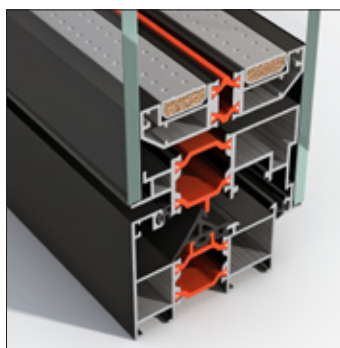
Siccóna S 500 (view from the inside):

The premium triple tempered Low-E glazing series for discerning building projects and stands for the highest quality in design and technology. Glazing totally covers the panel or such resulting a fully waterproof window system, while at the same time minimizes the frame's evidence.



Siccóna S 300 (view from the outside):

The standard double tempered Low-E glazing series. Glazing totally covers the panel or such and stands at the same level with the window frame.



| Siccóna Series | Uw value* | Ug value* | Uf value* |
|----------------------|------------|-----------|-----------|
| Siccóna S 300 | 1.82 W/m²K | 1.3 | NA |
| Siccóna S 500 | 1.26 W/m²K | 0.6 | NA |

***Note:** When the window dimensions exceed the tested piece, the Ug and Uf factors are improving, while the Uw value remains the same.

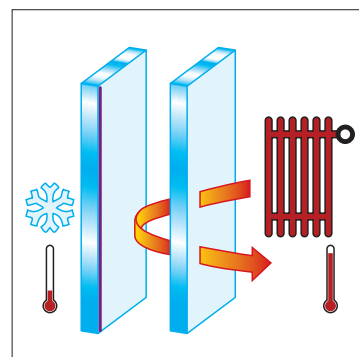
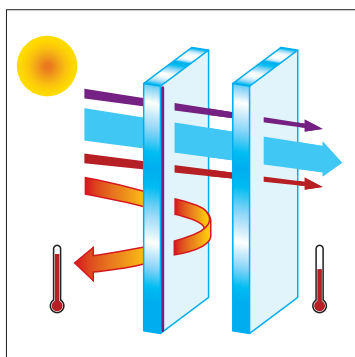


The Structural Window

Top quality glazing

Siccóna window system typically requires dual insulated glazing for all operable systems, since it is based on the principle of structural glazing. The glazing is specially made for Siccóna and is fully tempered - toughened Low-E glazing in both sides of the **Siccóna** window system, resulting:

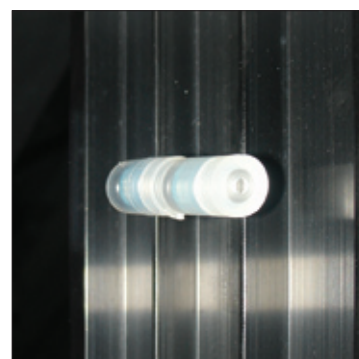
- Better visual quality and clarity.
- Incomparably smooth surface.
- Increased mechanical resistance - 5 times more durable compared to the ordinary glass.
- Better quality of Low-E soft coating.
- Sufficient resistance to excessive temperature variations - no danger of thermal shock.
- Safe breaking - falls into very small harmless pieces (less than 0.5 cm² each) In case of breaking.



Exceptional adaptability to the external conditions

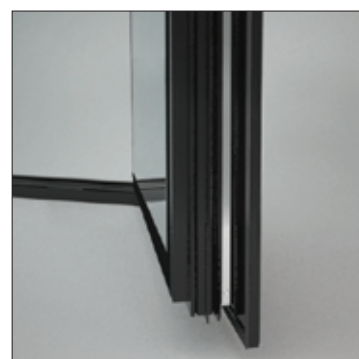
Siccóna window system is engineered with a **Two-Way Valve**, which adjusts the inner pressure of the spacer with the outer pressure, when the differential pressure exceeds a range of approximately 80 mill bar.

An excessive pressure differential is produced in case the window is produced at a sea-level pressure and transported to the mountains, or when the insulating glass is sealed in a shiny day (high pressure) and exposed in bad weather conditions (low pressure).



Ultimate functionality

Siccóna window system is weatherproof guaranteed - due to the almost totally glazed outdoor surface, the all-around fitted EPDM gaskets, as well as the peripheral multipoint locking system. All the components join together perfectly to create a coherent unit of transparent architecture.



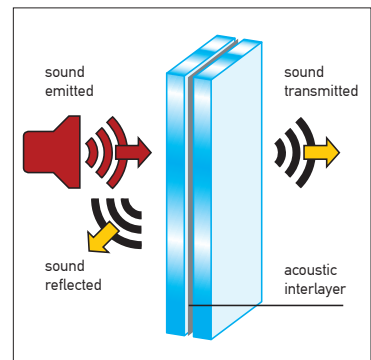
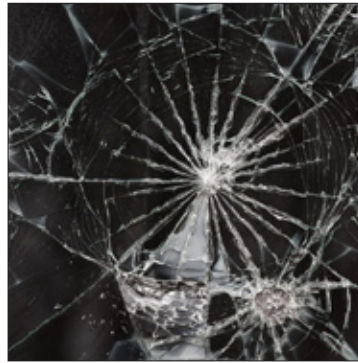
Engineered to the highest standards, offering exceptional performance and reliability

Incomparable versatility

Siccóna window system is a highly versatile system corresponding to the highest architects or building professionals' requirements as far as the window size, the wind impact, thermal insulation, sound-proofing, security and safety requirements.

Architects, designers and clients receive expert, solution-oriented advice on a variety of issues such as:

- Exceptional energy efficiency (U value) through filling the system glazing chambers with **argon**.
- Sound insulation level.
- Vision preference: clear, semi clear (one-way mirror), or opaque glazing.
- Intrusion resistant or bulletproofing laminated safety glazing.
- Less-frame option by fitting seamlessly the case into the wall, using the specially developed frame attachments.



Stylish up to every single detail

The unique, discrete handle **Siccóna** window system, awarded for its architectural design, emphasizes the unique appearance of the visionary glazing of the system.

Siccóna window system is offered in black anodized uniquely elegant color, as well as into white and grey, powder coated variants.



Siccóna uniquely elegant colors



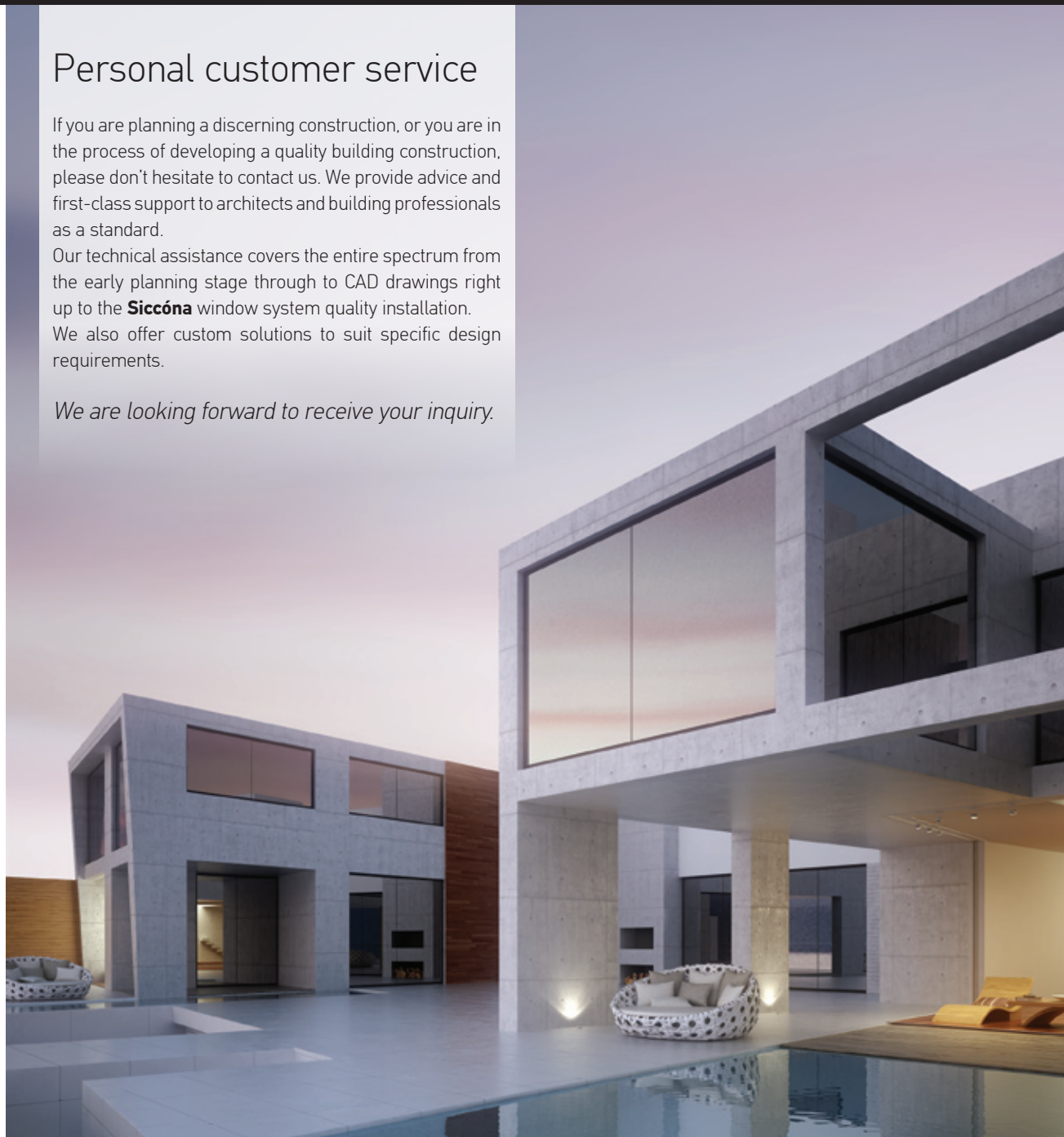
Personal customer service

If you are planning a discerning construction, or you are in the process of developing a quality building construction, please don't hesitate to contact us. We provide advice and first-class support to architects and building professionals as a standard.

Our technical assistance covers the entire spectrum from the early planning stage through to CAD drawings right up to the **Siccóna** window system quality installation.

We also offer custom solutions to suit specific design requirements.

We are looking forward to receive your inquiry.



The Structural Window

www.siccona.gr